



**ROYAL
PLASTERS**

RG
Royal General Industries

WALLSOFT
white cement based putty

**ROYAL
GYP/SHEET**



Our promoters...



Chairman

Mr. Durairaj Periasamy

Is an Indian Nationality residing in Gulf countries comes with an exhaustive professional experience of over 30+ years of Mining, Construction & Road Development. He is an Energetic and highly empowered professional with industry exposure in multifunctional domains with a highly reputed business establishments by adapting multi campus organizational work environment.

A very **successful 'Managing Director' & 'Shareholder' for 09 Group of Companies in Oman with 70% of major shares.**

- Oman Roads Engineering Company LLC
- Muscat Global Mining L.L.C
- Muscat Gypsum Product L.L.C
- Muscat Transportation Co. L.L.C
- Muscat General Construction Co L.L.C
- Muscat International Recycling L.L.C
- Muscat General Ready-mix Co. L.L.C
- Muscat Travel And Tourism L.L.C
- Muscat International Car Rentals L.L.C

Having made a substantial respectable reputation for himself in the 30 years of Mining, Construction & Road Development Sector, **Mr. Durairaj Periasamy** now ventures into his passion, i.e., **to step ahead in the field of Mining, Shipping & Trading** specifically for the next opportunity of growth.



Managing Director

Mr. Purushottam Tota

Is an Indian Nationality residing in Gulf countries. An astute professional with almost 23+ years extensive experience in areas of Gypsum Products, Cement, Cement Boards, and Granite Projects. He have a consulting services named as "Gypsum Engineering Solutions", which was started in 2012 and completed 7 projects in different locations (India, Kenya, Oman, Qatar & Bhutan). He is expert in...

- Preparing Techno-commercial feasibility reports, which covers Technical, Financial & Marketing aspects of the business.
- Taking turn-key projects which covers, Project Planning, Erection & Commissioning, and Process stabilization.
- Handling Operational Contract, Product Development, Process Training & Product Promotions.

With his strong analytical skills, creative team leadership, proactive and effective corporate communications, he is culminating as **'Chief Executive Officer'** at **Muscat Group of Companies.**

After having affluent respectable reputation in the field of Gypsum Industries and Logistics, **Mr. Purushottam Tota** now stretches his hands for the next level of growth and development of **Gypsum Industry and Logistics** in Global wide.

MIND VIBES LIFE...
POSITIVE



About RGI

RGI aspire to change the way Customer think about the service industry. To have a win-win situation to both the Groups, Royal General Industries started as an exclusive distributor for all the products produced by the Muscat Group of Companies, OMAN. MGC is a Group of Companies, having own GYPSUM MINING division and GYPSUM BUILDING MATERIAL division.

Along with exclusive distribution, RGI is also starting their own product divisions across various locations in INDIA and OMAN. Innovation through collaboration, we transcend multiple industries which allow us to utilize best practices from multiple industries and to create the best suit products to all customers, a one-stop solution by offering products in the different fields.



Mission

Our RGI Mission is to provide excellence and quality through innovation, integrity and a forward-thinking approach. We transcend multiple industries which allow us to utilize best practices from multiple industries and to create the best suit products to all customers, a one-stop solution by offering products in the different fields.

- Trading
- Gypsum Minerals
- Gypsum Building materials
- Shipping and
- Petro-chemical products.



Vision

Our RGI Vision is to be an industry leader in every business venture and to build customer and stakeholder value. We aspire to change the way you think about the service industry.

- Superior customer service,
- Innovation through collaboration,
- Always striving for excellence and Quality



Our Corporate Policy

Our persuasion is that being quality-oriented, protecting the environment, being safety-conscious and risk-aware is a substantial success factor in global competition for our customers and for our company and its employees as a result.



Our Social Responsibility

We aim at becoming a glorious excellent Group of Companies, which has solid corporate principles and much potential for sustainable growth. We believe in hard work and creating shared value for the communities in which we operate. This concept spurs us on to evaluate the way our business uses, transforms, renews and creates resources and we wanted to leave a legacy for future generations of professionals.

So, to develop the community where we are progressing, we want to start vocational trainings on various courses to the youngsters who are interested in the fields and we will give opportunity to the successful students.



WHY WE COLLABORATE WITH MGC

Why RGI is best choice for the customers...

- RGI is having its own shipping vessels, so no delay in product delivery at destinations.
- Having tie-ups with various ports in India, which is an advantage of storage spaces in ports for longer periods.
- Being an exclusive distributor, we can give the product with high quality and processed at various laboratory tests.
- Fully equipped with highly qualified technical experts and equipments from best in world manufacturers in every field of business.
- Our Product manufacturers have state-of-art technology laboratory and they are using world class equipments from various countries.
- We can take the guarantee of all products that we distribute around the world.
- MGC is highly quality conscious at all levels.



Guarantee



Speed



Laboratory



Quality



Own Shipping



Technical Experts



Exclusive Distribution



Equipment From Various Parts Of World

- MGC is holding their own Gypsum mines with highest production capacity of 4,000,000 / Year in OMAN.
- Oman is the best quality producer of Gypsum mineral.
- MGC is having its own Gypsum Boards plant with second highest production line capacity (In two phases) of 60 Million Sq mt/ Year in Asian continent.
- MGC is having their own inland transportation with Central workshop maintained by OEM team, which will reduce the time delay in receiving finished goods.
- MGC is located at SALALAH, Oman. Salalah is strategically located at the major East-West Shipping Lane; the Port of Salalah is viewed as the region's best located port in order to access the Middle East, Indian Subcontinent and East Africa.

OUR BUSINESS NETWORK



GOVERNMENT OF INDIA
MINISTRY OF CORPORATE AFFAIRS
Registrar, Chennai
Block No. 6, B' Wing, 2nd Floor Shastri Bhawan 26, Chennai, Tamil Nadu, 600034, India

FORM 16
[Refer Section 12(1)(b) of the LLP Act, 2008]
CERTIFICATE OF INCORPORATION

LLP Identification Number: AAM-8449

It is hereby certified that ROYAL GENERAL INDUSTREIS LLP is incorporated pursuant to section 12(1) of the Limited Liability Partnership Act, 2008.

Given at Tamil Nadu this Twenty first day of June Two thousand eighteen.

Registrar, Chennai

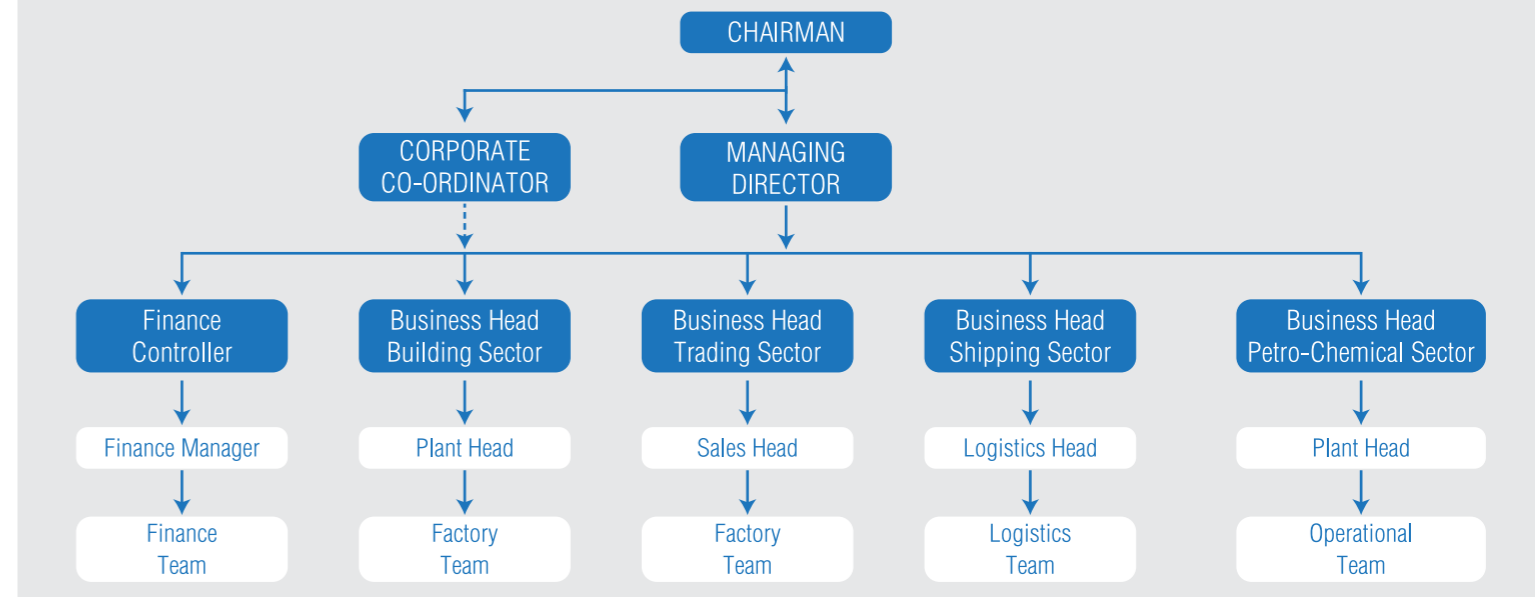
Note: The corresponding form has been approved by N. CHOLARAJAN, and this certificate has been digitally signed by the Registrar through a system generated digital signature under rule 36(3)(ii) of the Limited Liability Partnership Rules, 2009.

The digitally signed certificate can be verified at the Ministry website (www.mca.gov.in).

Mailing Address as per record available in Registrar office:
ROYAL GENERAL INDUSTREIS LLP
5 A1 YAMUNA FLATS, VENKATESAN NAGAR,
CHENNAI, Chennai,
Tamil Nadu, 600092, India.



Royal General Industries Organisation Chart



Legend



Trading



Building Products

Minerals
(Gypsum, Limestone & Dolomite)



Our Business sectors

Petro-chemicals

Shipping

And we will grow further, in future....

BUILDING SECTOR

RGI invested in its own business in Building material products sector. They invested in various divisions at different locations of India and Oman.



Nellore

Our first investment is at Nellore. RGI at Nellore is going to start Building material accessories plant which includes

Putty Plant

- Wet
- Dry

Metal Accessories

- Ceiling Frames
- Shaft Frames
- Wall Frames
- Sealant
- Anchors
- Maxi Tech
- Tapes, insulations
- Brackets & Screws

Production capacity

60 MTs/Day
1500 MTs/ Month (Averagely)



Visakhapatnam

Our next investment is at Visakhapatnam. RGI at Visakhapatnam is going to start

- Gypsum Board plant
- Gypsum Plasters
- Ceiling Tiles and
- Jointing Compounds

Production capacity

10 Million Sq Mt/ year



Oman

Looking into the market requirement, RGI come up with the proposal to start Paper Industry in Oman

Gypsum Board is made of calcium sulfatedihydrate with or without additives, typically extruded between thick sheets of facer and backer paper. RGI is going to manufacture Gypsum paper in its Oman plant



MINERAL SECTOR



SHIPPING SECTOR

Gypsum Mineral



Our mines located in Thumrait, Oman. Muscat Global Mining will produce 4,000,000 MTs/ year. MGM Production Capacity is Largest. Our quality is 95% pure and 100% Natural.

We will supply Agricultural Gypsum also

Size Of Gypsum Rock

- 0 - 25 MM
- 25 - 50 MM
- 50 - 100 MM

Limestone



Production capacity : 10,000 MT/ Day

Dolomite



Production Capacity : 100 MT/ Day

Agricultural Gypsum



We will supply Agricultural Gypsum also.



RGI imports minerals and Gypsum building products and also exports its sister companies products to other countries. To ship these goods they need 800 Containers/ Month. Only to fulfill the Minerals business, RGI needs 5 vessels/ Month.

Seeing the in-house requirement of vessels for the business to grow, RGI is starting its Shipping sector by purchasing one bulk vessel by the end of 2018, another one by end of 2019 and third vessel by mid of 2020.

After fulfilling the in-house requirement, RGI will do business for the small industries in Oman as well as India to shipment their goods.



PETRO-CHEMICAL SECTOR

TRADING SECTOR



Almost all major metro cities are producing huge amount of Sewage wastes. Our Waste Management solution is sustainable than incineration / land-fill of these sewage wastes and has potential to produce either power or energy. By utilizing the wastes we can produce tones of synthesis gas (syngas) and subsequently as Methanol from the non-recyclable Sewage Wastes.

In 2010, global methanol demand reached 49 million metric tons (MMT), but by 2021, demand will surpass 95 MMT according to the IHS Market World Analysis—Methanol 2017.

Our technology uses these non-recyclable organic materials along few percentages of other waste materials such as plastics bags etc as feedstock for production of Methanol.

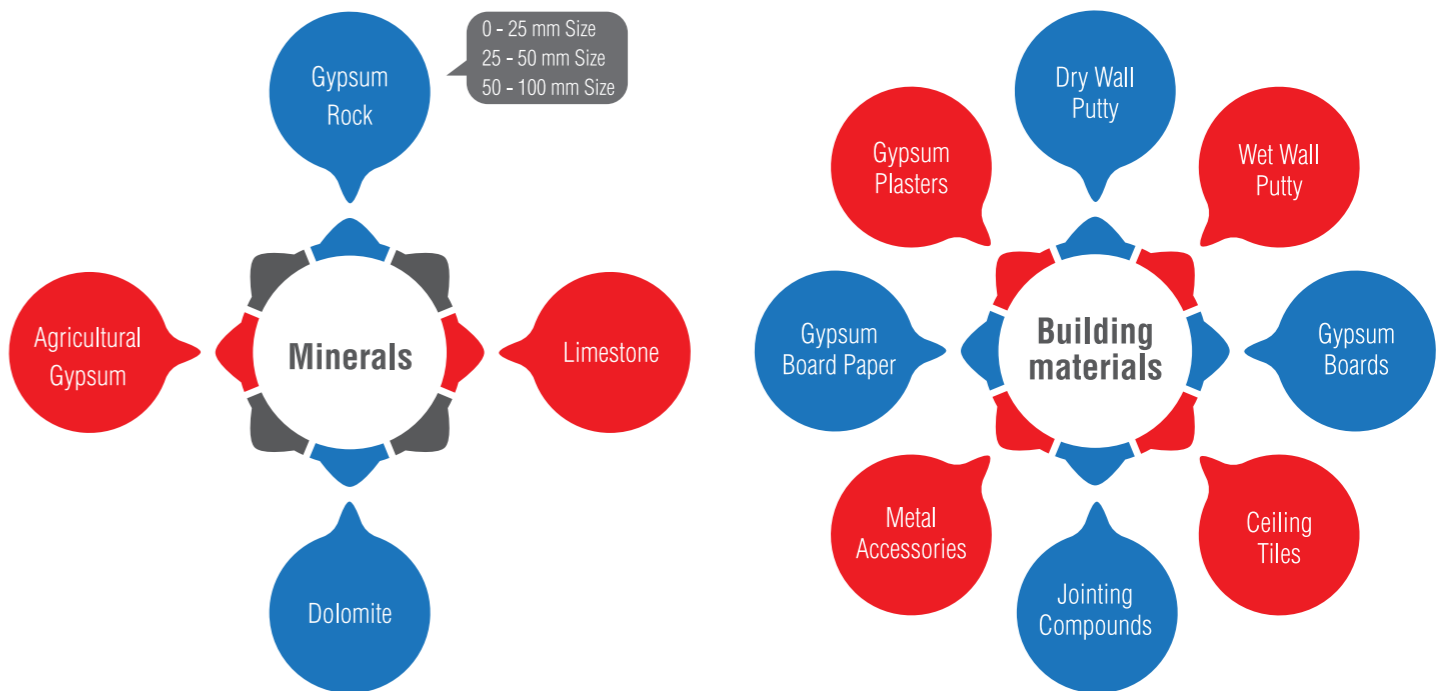


Our trading divisions are located in various parts of the world.

- Oman
- UAE
- Srilanka
- Nepal
- Bangladesh
- Nigeria
- Kenya
- Tanzania

Our Head office is in Chennai

Our Trading sector includes the range of products...





Technical comparative chart of Royal Plaster vs Sand Cement Plaster

SL.NO	GYPSUM PLASTER	CEMENT-SAND PLASTER
01	Royal Plaster is a ready Plaster where only water has to be mixed	Sand & Cement Plaster needs to be mixed in ratios controlled by labour without any standardized means
02	It is a single application plaster with smooth finish	Cement, sand Curing and Putty are required to finish the surface
03	Royal Plaster not required curing and no wastage of water	Sand Cement of Plaster needs curing for 10-12 days at least 2 times of day
04	After drying for about 3-4 days, the surface can be directly painted	A coat of POP is required to smoothen the wall & make it ready to paint
05	No cracks will occur after application of Royal Plaster	Hairline cracks are always found in a sand cement plaster
06	Excellent bonding and compatible with all type of paints	Needs putty or POP before painting
07	Royal Plaster is of the highest quality and lab tested	Sand quality can't be determined
08	The space looks large and beautiful as it is pure white in colour	The space looks like smaller and unappealing as it is dark grey in colour
09	Can be applied on all wall/surfaces	Cannot be applied on smooth surfaces
10	Excellent for repair works	Looks patchy in repair works and air line cracks appear
11	Low density – light weight and total strength on drying	High density and needs water to attain strength
12	Easy workability and economical for an excellent finish	Difficult to work in case of excellent finish and also becomes expensive
13	Decreases the building weight as it can be applied in 3mm to 30mm thick ness	Increases building weight as a thickness is 12mm
14	No Spoilage : It is packed in 25 kg bag and is opened at work spot	High spoilage : Sand has to be cleaned, washed and lifted in open containers, hence spoilage cannot be accounted
15	High Shelf life- one year	(Cement) low shelf life – 3 months

What is Gypsum Plaster?

Gypsum plaster is among the most commonly used material in the construction and home-remodelling niche. Gypsum is sourced from mineral rocks that contain rich deposits of calcium sulphate. Gypsum plaster is also called plaster of Paris. It is prepared from finely-grounded gypsum, which is heated to extremely high temperatures and then mixed with water. The resulting material, called gypsum plaster, is superior to cement and mortar in many ways.

When dry POP powder is mixed with water it hardens. This material which can be applied over brick, block or concrete surface to form a smooth surface is called gypsum plaster.

Before....

Earlier, a 6 mm coat of gypsum plaster (termed as POP punning) is usually applied on the top of cement plaster to give a smooth finish to it before painting. This is a two stage process and involves various elements like sand, cement and water which has to be mixed onsite.

Recent developments.....

This process is slowly being replaced by a direct application of single coat of gypsum plaster. In gypsum plaster, readymade POP powder is mixed with water and applied directly on the wall. Gypsum Plaster can be applied directly on any brick, solid or hollow blocks, AAC blocks and plaster boards. Gypsum plaster has good insulation properties, fire resistant and impact resistant. Also, gypsum saves a lot of time during construction and has superior finish. These properties have clearly drawn attention of real estate builders and contractors towards choosing gypsum plaster over traditional cement plaster.



Comparison Between Gypsum Plaster And Traditional Cement Plaster

SI No.	PARAMETERS	GYPSUM PLASTER	SAND & CEMENTPLASTER
1	Availability	Ready to use Bags	Scarcity of Sand & water availability
2	Finish	Crack free and smooth finish	Rough surfaces
3	Time Required for paint ready surface	72 hours in normal weather condition	At least seven days curing and then three days drying required
4	Water saving	Does not require water curing	At least seven days curing
5	Shrinkage, Crack	No Shrinkage and cracks	Shrinkage ,cracks are common
6	Density (kg/m3)	650 to 700	1400 to 1500
7	Coverage m2/ton for 13mm thick	65 - 70	30 - 33
8	Compressive strength N/mm2	7	12
9	Quality Assurance	As per IS 2547-1976 Part I &II	No
10	Labour	Labour saving Process	Labour intensive process
11	Green Credentials	LEED points available	Not Applicable



Made for any surface, anywhere, anytime...

After seeing, Gypsum Products Manufacturing Plants closely since 25 years, we know the effective and efficient equipment manufacturers in the world. So, we choose best equipments from best suppliers in the world (Germany, Canada, Turkey & India). Along with them, we have our own team of experts, who can designs and manufactures some equipments (30% of the total equipment of the plant) in the Gypsum Products Manufacturing Plant. All combined MGPL is using the State of the art technology.

Royal Gyp Plasters are made from the purest natural Gypsum, and offer a sophisticated and comprehensive range,

- Comprising one-coat,
- Hand-applied,
- Machine-applied and finishing plasters.

- The most important aspect of all plasters from the Royal Plasters are stable, is the fact that they don't require any curing whatsoever.
- Royal Plasters are environmental friendly.
- Royal Plasters are impact resistant which comes with a degree of hardness equivalent to a thick wall of heavy masonry construction.
- Royal Plasters are good solution for repairs and cracks on the walls.
- Royal Plasters acts as a thermal insulator when combined with insulation materials.
- Royal Plasters equilibrates humidity and heat peaks. It stores humidity when room is humid and automatically releases humidity when the indoor air becomes dry.
- Tough Plasters regulates sounds, fire protective and non-combustible.

95% Pure Natural Gypsum is the secret to our Strength...



Gyp Plaster One Coat

- Smooth
- Easy to apply and with a high quality finish that is ready for any paint.
- With no curing required.
- It's also energy saving.
- Thermally insulating.
- Economical.
- Fire resistant.

Technical Specifications

Water/Plaster Ratio	65%
Initial Setting Time	15 minutes
Application	> 12 kg/ sq.m
Density	750kg/Cubic Metre
Packaging	25 Kg PP Bags



Gyp Prime Plaster One Coat

This gives extra coverage, and an exciting white finish. It is economical in usage, is fire-resistant and as with all our plasters there is no curing required.

Technical Specifications

Water/Plaster Ratio	60-65%
Initial Setting Time	15 to 20 minutes
Coverage	12 kg / sq.m for one cm thickness
Density	650-700kg/Cubic Metre
Packaging	25 Kg PP Bags



Gyp Supreme Plaster One Coat

More coverage and superb white finish. It is economical in usage, easy to apply, is fire-resistant, doesn't require curing and is energy saving too. Not to mention being thermally insulating.

Technical Specifications

Water/Plaster Ratio	60-65%
Initial Setting Time	15 to 20 minutes
Coverage	9.5 – 10 kg/sq.m for 1 cm thickness
Density	650-700kg/Cubic Metre
Packaging	25 Kg PP Bags



Gyp Spray Plaster

Gyp spray Plaster has a drying time of 2-3 hours and provides durable smooth white surface ready for direct application of decorations.

Gyp Spray machine plaster-application is designed to be applied by machine up to 20mm thickness.

It is suitable for direct application onto block work, uneven in-site concrete and thin joint block work.

It offers excellent productivity and is up to 3 times faster than traditional plastering methods.

Technical Specifications

Water/Plaster Ratio	50-55%
Initial Setting Time	180 minutes
Density	700kg/m3
Packaging	25 Kg PP Bags



Our First project in India is Putty Plant in Nellore

Production capacity
60 MTs/Day
1500 MTs/ Month (Averagely)

Our putty products include
Dry and Wet forms

Benefits of White Cement Putty:

- Plastering walls may have uneven surfaces. Application of two thick coats of putty will even out these surfaces and give your paint a smooth final finish.
- Wall care putty integrates with the plaster to create a stronger bond with the paint to make it last longer.
- Since it has water resistant properties, it will save your paint from dampness and the resulting discolored patches for a long time.
- It prevents flaking of the expensive coats of paints.
- It is eco-friendly.
- It doesn't require curing
- It brings out the true shade or tone of the paint.
- It gives your walls a silky smooth finish.
- It can be used both as an exterior wall putty and interior wall putty.

Wall Putty is a material with high plasticity, similar in texture to clay or dough, typically used in domestic construction and repair as a sealant or filler. Wall Putty is a cementitious material that is applied onto a plastered wall before painting. Purpose of Putty is to fill in the hairline cracks or pores any on the wall surface, to create a uniform, leveled out surface ready for painting and to prevent or reduce water seepage/absorption.

Wall putty is a white fine powdered substance that is used to provide smooth base to the wall surface. It provides smooth damp finish and it allows all types of colours to be applicable over the walls. It is applied on the wall and ceilings prior to priming and painting.

Agricultural Gypsum



While farmers have used gypsum (calcium sulphate dehydrate) for centuries, it has received renewed attention in recent years. This resurgence is due in large part to ongoing research and practical insights from leading experts that highlight the many benefits of gypsum. More than 200 attendees heard from industry representatives, scientists, consultants and growers on the use of gypsum to improve soil structure, reduce nutrient runoff and more.

Major Benefits of Gypsoms

Here are five key (and overlapping) benefits of gypsum highlighted:

1. Source of calcium and sulphur for plant nutrition. "Gypsum is an excellent source of sulphur for plant nutrition and improving crop yield."
2. Improves acid soils and treats aluminium toxicity. "Surface-applied gypsum leaches down to the subsoil and results in increased root growth,"
3. Improves soil structure. "Gypsum has been used for many years to improve aggregation and inhibit or overcome dispersion in sodicsoils."
4. Improves water infiltration. "When we apply gypsum to soil it allows water to move into the soil and allow the crop to grow well," he said.
5. Helps reduce runoff and erosion. "Gypsum should be considered as a Best Management Practice for reducing soluble P losses,"

Natural Gypsum



The mineral Gypsum precipitated some 100 to 200 million years ago when sea water evaporated. From a chemical point of view it is Calcium Sulphate Dihydrate (CaSO4.2H2O) deposited in sedimentary layers on the sea bed. Under high pressure and temperature Gypsum turns into Anhydrite (CaSO4).

In nature, Gypsum and Anhydrite occur as beds or nodular masses up to a few meters thick. Gypsum is formed by the hydration of Anhydrite. The depth of hydration can range from the surface of the deposit down to three hundred meters, depending on temperature and pressure, topography and the structure of the deposit. Anhydrite is often mined in conjunction with Gypsum, but is comparatively limited in its technical applications. The content of Gypsum in sedimentary rock varies from 75% to 95%, the rest being clay and chalk. Gypsum rock contains about 21% of chemically combined water.

Gypsum usage is Gypsum Wall board manufacturing, Plasters, Value added plasters, Ceiling tiles, Cement industry,

We supply gypsum rock in below sizes, 10-50 mm / 50-100 mm / 100 -150 mm

Gypsum Components	Percentage(%)	Gypsum Components	Percentage(%)
CaSO4.2H2O	94.00	MgO	0.08
Combined water	19.22	NaCl	0.01
SiO2	0.34	So3	42.70
Al2OM3	0.048	Moisture Content	0.35
Fe2O3	0.065	Size (0-50mm)	100
CaO	30.67		

Royal Gyp Regular Plasterboard



Field of Application

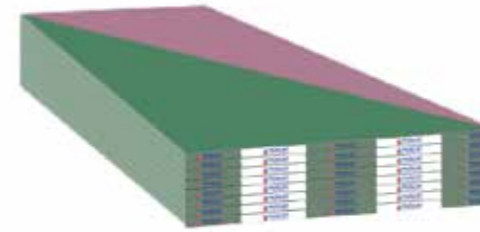
Royal Gyp Regular Plasterboards are used in Residential Buildings, Commercial Buildings, Hospitals, Airports, Educational Institutions and other such applications.

Product Characteristics	
Length	Standard length is 2400mm & 3000mm. Special length is 1800mm to 4500mm
Width	1200mm & 1220mm
Thickness	9.5mm, 12.5mm, 15mm & 16mm
Edge	Tapered, Square, Bevelled & Round
Colour	Face: Ivory, Back: Grey
Fire Rating	(Royal Gyp System application)
Acoustic Rating	(Royal Gyp System application)

Product Description

Royal Gyp Regular Plasterboards are produced from high purity natural gypsum core being sheeted in a closely adhering best selected paper liners. Royal Gyp Regular Plasterboard has fiber glass which improves strength and Sag Resistance. It is lightweight for use in standard internal wall and ceiling applications.

Royal Gyp Fire & Moisture Resistance Plasterboard



Field of Application

Royal Gyp fire & moisture Resistant Plasterboard used in Residential Buildings, Commercial Buildings, Hospitals, Airports, Educational Institutions and other such applications.

Product Characteristics	
Length	Standard length is 2400mm & 3000mm. Special length is 1800mm to 4500mm
Width	1200mm & 1220mm
Thickness	9.5mm, 12.5mm, 15mm & 16mm
Edge	Tapered, Square, Bevelled & Round
Colour	Face: Green, Back: Pink
Water Absorbtion	10 %
Fire rating	Royal system application

Product Description

Royal Gyp fire & moisture Resistant Plasterboard is lightweight for use in standard internal wall and ceiling applications where fire & moisture resistance protection is required. They are produced from high purity natural gypsum core being sheeted in a closely adhering best selected paper liners.

Royal Gyp Moisture Plasterboard



Field of Application

Royal Gyp Moisture Resistant Plasterboard used in Residential Buildings, Commercial Buildings, Hospitals, Airports, Educational Institutions and other such applications.

Product Characteristics	
Length	Standard length is 2400mm & 3000mm. Special length is 1800mm to 4500mm
Width	1200mm & 1220mm
Thickness	9.5mm, 12.5mm, 15mm & 16mm
Edge	Tapered, Square, Bevelled & Round
Colour	Face: Green, Back: Grey
Water Absorption	10%

Product Description

Royal Gyp moisture Plasterboard is lightweight for use in standard internal wall and ceiling applications where Moisture Resistant properties is required. They are produced from high purity natural gypsum core being sheeted in a closely adhering best selected paper liners. Royal Gyp moisture Plasterboard has fibre glass which improves strength and Sag Resistance.

Royal Gyp Impact Plasterboard



Field of Application

Royal Gyp Impact Plasterboard used in corridors, Busy areas, Residential Buildings, Commercial Buildings, Hospitals, Airports, Educational Institutions and other such applications.

Product Characteristics	
Length	Standard length is 2400mm & 3000mm. Special length is 1800mm to 4500mm
Width	1200mm & 1220mm
Thickness	9.5mm, 12.5mm, 15mm & 16mm
Edge	Tapered, Square, Bevelled & Round
Colour	Face: Yellow, Back: Grey

Product Description

Royal Gyp Impact Plasterboard consists of a high density reinforced gypsum core with glass fibers and special additives encased in a very heavy natural finish strong paper liners. It can be used where high impact resistance, non-combustibility and fire resistance is needed. Royal Gyp Impact Plasterboard is produced from high purity natural gypsum core being sheeted in a closely adhering best selected paper liners.

Royal Gyp Fire Resistance Plasterboard



Field of Application

Royal Gyp fire Resistant Plasterboard used in Residential Buildings, Commercial Buildings, Hospitals, Airports, Educational Institutions and other such applications.

Product Characteristics	
Length	Standard length is 2400mm & 3000mm. Special length is 1800mm to 4500mm
Width	1200mm & 1220mm
Thickness	9.5mm, 12.5mm, 15mm & 16mm
Edge	Tapered, Square, Bevelled & Round
Colour	Face: Pink, Back: Grey
Fire rating	Royal system application (Tested ASTM E119)

Product Description

Royal Gyp fire Plasterboard is lightweight for use in standard internal wall and ceiling applications where fire protection is required. They are produced from high purity natural gypsum core being sheeted in a closely adhering best selected paper liners. Royal Gyp fire Plasterboard has fiber glass which improves strength and Sag Resistance.

Royal Gyp Glass MAT Plasterboard



Field of Application

Royal Gyp Glass MAT Plasterboard used in both exterior and interior use. Delivers fire, moisture, water and mole resistance in one board, due to the special additives in the gypsum core, that is sandwiched between the glass mat liner on both sides.

Product Characteristics	
Length	Standard length is 1830mm. Special length is 1800mm to 4000mm
Width	1200mm & 1220mm. Ask our team for special width sizes
Thickness	13mm, 15mm & 16mm
Edge	Tapered, Square, Bevelled & Round
Colour	Face: Blue, Back: Blue

Product Description

Royal Gyp Glass Mat Plasterboard is suitable for hybrid construction in multi- storey buildings. Royal Gyp Glass MAT Plasterboard used in both exterior and interior use.



Quality Policy

Quality is an integral part of RGI's Corporate Business Principles. These principles guide our actions to deliver products and services that are Compliant, Preferred and Safe. They are essential for the achievement of our ambition to be recognized and trusted to offer products and services that enhance the quality of life and contribute to a healthier future.

At RGI, our commitment is to never compromise on the safety, compliance and quality of our products and services.

- Process approach-through implementing and improving quality management system in accordance with ASTM and EN standards.
- Establishing long term partnership with suppliers.
- Consistently complying to law legislation in particular business field.

Strives for zero defects and no waste by constantly looking for opportunities to apply our continuous improvement approach to deliver competitive advantage.



Laboratory

We operate a full length lab facility. We test end-to-end lab process and analysis that duplicate full-scale manufacturing principles to provide fast information to operators at the production plant to produce good quality products.

We analyse Gypsum samples including Rock and other byproduct Gypsum. Using ASTM and EN test methods, we can test lab scale fire resistance, flexural strength, board core structure, impact resistance, humidified deflection and more for various R& D compositions or formulations. We benchmark lab samples, plant trial samples or commercial boards.



We Always Deliver More Than Expected

We understand that every customer is different and therefore has different requirements. We work hard to constantly and consistently deliver the best RGI products which become preferred choice of companies, builders, interior decorators etc.

Royal General Industries takes pride in offering the highest standard of products according to the market requirements. We want to become your choicest supplier of products for partition, wall lining, ceiling, flooring, insulation and fire protection systems. We are known for quality, attention to detail and unrivaled industry knowledge.

We are fully apprised of RGI product development & our products meet your performance requirement. Our warehouse is always stocked with the complete product line which helps us to cater anywhere and anytime for anyone. All our products are specially selected for professional quality & reliability.



Royal General Industries LLP

New No.18, Old No. 19A,
7th Cross Street(West),
Shenoy Nagar, Chennai - 600 030.

☎ +91 62813 70021
✉ info@rgiindia.com
🌐 www.rgiindia.com



Muscat Group of Companies

P.O.Box: 2117,
Postal Code: 211,
Salalah - Sultanate of Oman
✉ info@royalmgc.com
🌐 www.royalmgc.com



Royal Gypsum Products- F.Z.C.,

Office-C1-620,
P.O.Box No: 45253,
Ajman Free Zone,
Ajman, UAE